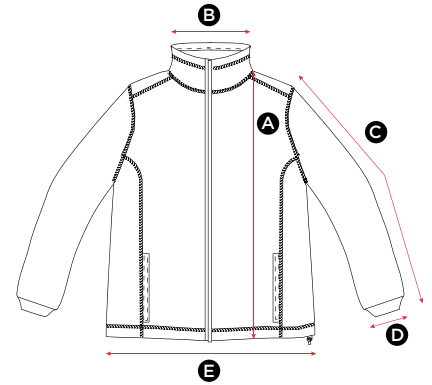


## SG80 Men's Full Zip Fleece 870.52

| MEASUREMENTS                  | S    | M    | L    | XL   | 2XL  | 3XL  | 4XL  | 5XL  |
|-------------------------------|------|------|------|------|------|------|------|------|
| <b>A</b> Length               | 70.5 | 73   | 75.5 | 78   | 80.5 | 83   | 85.5 | 88   |
| <b>B</b> Back neck opening    | 22   | 22.5 | 23   | 23.5 | 24   | 24.5 | 25   | 25.5 |
| <b>C</b> Sleeve length        | 63   | 64.5 | 66   | 67.5 | 67.5 | 67.5 | 68.5 | 68.5 |
| <b>D</b> Sleeve width opening | 9    | 10   | 10   | 11   | 11   | 11   | 12   | 12   |
| <b>E</b> Bottom hem opening   | 57   | 60   | 63   | 66   | 69   | 72   | 75   | 78.5 |

in cm

All measurements are within industry standard tolerances and are product dependent.

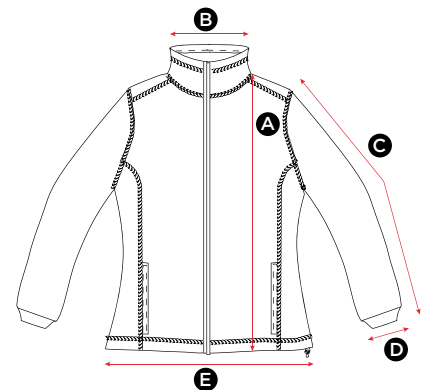


## SG80F Ladies' Full Zip Fleece 819.52

| MEASUREMENTS                  | XS   | S    | M    | L    | XL   | 2XL  |
|-------------------------------|------|------|------|------|------|------|
| <b>A</b> Length               | 59   | 62   | 64   | 66   | 68   | 70   |
| <b>B</b> Back neck opening    | 17.5 | 18   | 18.5 | 19   | 19.5 | 20   |
| <b>C</b> Sleeve length        | 60.5 | 62   | 63   | 63   | 63   | 63   |
| <b>D</b> Sleeve width opening | 8    | 8.5  | 8.5  | 9.5  | 9.5  | 9.5  |
| <b>E</b> Bottom hem opening   | 50   | 52.5 | 55   | 57.5 | 60   | 62.5 |

in cm

All measurements are within industry standard tolerances and are product dependent.

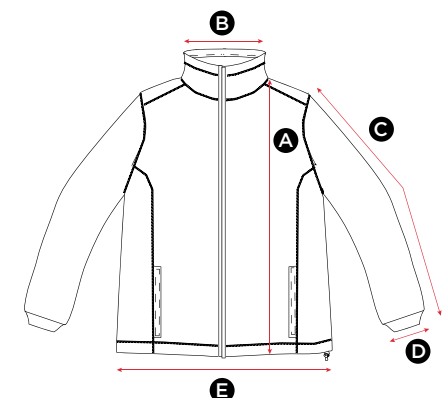


## SG80K Kids' Full Zip Fleece 818.52

| MEASUREMENTS                  | (Years) 3-4 | 5-6  | 7-8 | 9-10 | 11-12 |
|-------------------------------|-------------|------|-----|------|-------|
|                               | (CM)104     | 116  | 128 | 140  | 152   |
| <b>A</b> Length               | 46          | 50   | 54  | 58   | 62    |
| <b>B</b> Back neck opening    | 16          | 16.5 | 17  | 17.5 | 18    |
| <b>C</b> Sleeve length        | 35.5        | 37   | 42  | 46   | 48.5  |
| <b>D</b> Sleeve width opening | 6           | 7    | 7   | 8    | 8     |
| <b>E</b> Bottom hem opening   | 40          | 42.5 | 45  | 47   | 50    |

in cm

All measurements are within industry standard tolerances and are product dependent.

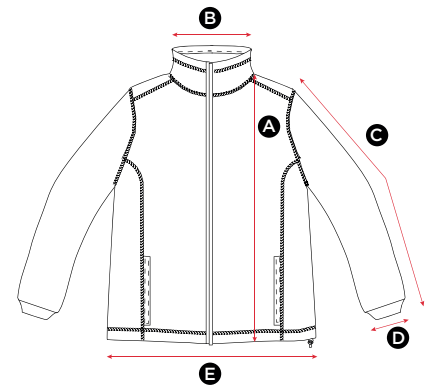


## SG80 Men's Full Zip Fleece 870.52

| GRÖßE                           | S    | M    | L    | XL   | 2XL  | 3XL  | 4XL  | 5XL  |
|---------------------------------|------|------|------|------|------|------|------|------|
| <b>A</b> Länge                  | 70.5 | 73   | 75.5 | 78   | 80.5 | 83   | 85.5 | 88   |
| <b>B</b> Halsausschnitt hinten  | 22   | 22.5 | 23   | 23.5 | 24   | 24.5 | 25   | 25.5 |
| <b>C</b> Ärmellänge             | 63   | 64.5 | 66   | 67.5 | 67.5 | 67.5 | 68.5 | 68.5 |
| <b>D</b> Weite der Ärmelöffnung | 9    | 10   | 10   | 11   | 11   | 11   | 12   | 12   |
| <b>E</b> Bundöffnung            | 57   | 60   | 63   | 66   | 69   | 72   | 75   | 78.5 |

Angaben in cm

Alle Größen liegen innerhalb der standardmäßigen Toleranzgrenzen der Branche und sind jeweils produktabhängig.

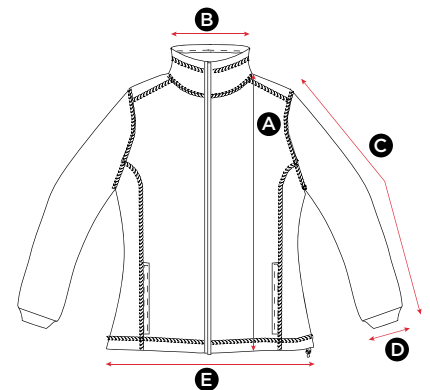


## SG80F Ladies' Full Zip Fleece 819.52

| GRÖßE                           | XS   | S    | M    | L    | XL   | 2XL  |
|---------------------------------|------|------|------|------|------|------|
| <b>A</b> Länge                  | 59   | 62   | 64   | 66   | 68   | 70   |
| <b>B</b> Halsausschnitt hinten  | 17.5 | 18   | 18.5 | 19   | 19.5 | 20   |
| <b>C</b> Ärmellänge             | 60.5 | 62   | 63   | 63   | 63   | 63   |
| <b>D</b> Weite der Ärmelöffnung | 8    | 8.5  | 8.5  | 9.5  | 9.5  | 9.5  |
| <b>E</b> Bundöffnung            | 50   | 52.5 | 55   | 57.5 | 60   | 62.5 |

Angaben in cm

Alle Größen liegen innerhalb der standardmäßigen Toleranzgrenzen der Branche und sind jeweils produktabhängig.



## SG80K Kids' Full Zip Fleece 818.52

| GRÖßE                           | (Years) 3-4<br>(CM)104 | 5-6<br>116 | 7-8<br>128 | 9-10<br>140 | 11-12<br>152 |
|---------------------------------|------------------------|------------|------------|-------------|--------------|
| <b>A</b> Länge                  | 46                     | 50         | 54         | 58          | 62           |
| <b>B</b> Halsausschnitt hinten  | 16                     | 16.5       | 17         | 17.5        | 18           |
| <b>C</b> Ärmellänge             | 35.5                   | 37         | 42         | 46          | 48.5         |
| <b>D</b> Weite der Ärmelöffnung | 6                      | 7          | 7          | 8           | 8            |
| <b>E</b> Bundöffnung            | 40                     | 42.5       | 45         | 47          | 50           |

Angaben in cm

Alle Größen liegen innerhalb der standardmäßigen Toleranzgrenzen der Branche und sind jeweils produktabhängig.

